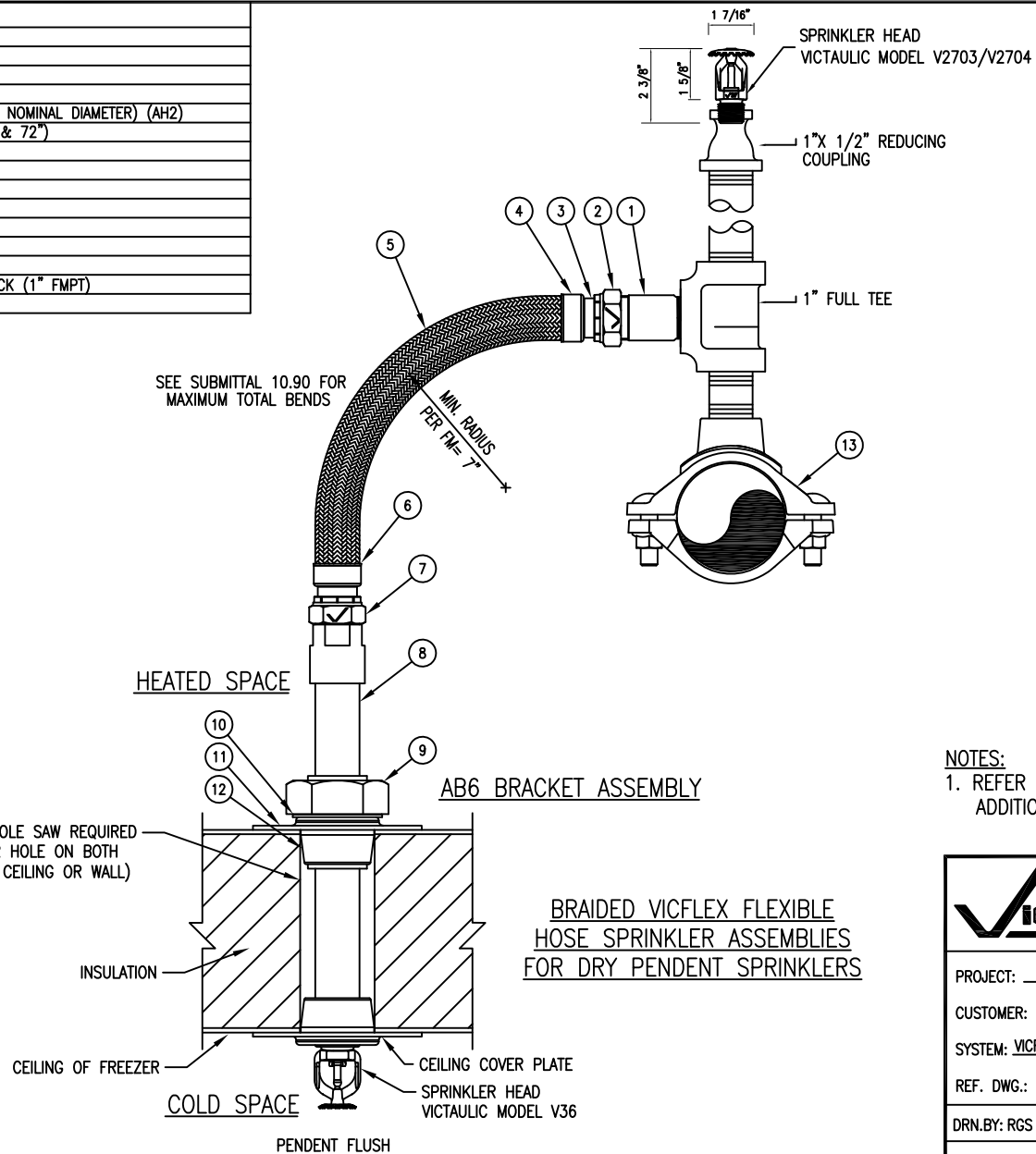


PRODUCT LEGEND	
1	INLET NIPPLE (1" MPT)
2	NUT
3	ISOLATION RING
4	COLLAR / WELD FITTING
5	STAINLESS STEEL FLEXIBLE BRAIDED HOSE (1" NOMINAL DIAMETER) (AH2) (LENGTHS AVAILABLE 31", 36" 48", 60", & 72")
6	COLLAR / WELD FITTING
7	NUT
8	V36 DRY SPRINKLER ASSEMBLY
9	NUT
10	LOCK WASHER
11	BASE PLATE
12	RUBBER PLUG
13	VIC MECHANICAL-T OUTLET STYLE 922 FIRELOCK (1" FMPT)
SEE VICTAULIC SUBMITTAL NUMBER 10.90	



NOTES:
 1. REFER TO VICTAULIC SUBMITTAL 10.90 FOR ADDITIONAL DETAILS.

		CONSTRUCTION PIPING SERVICES DIVISION	
PROJECT: _____	PROJ.# _____		
CUSTOMER: _____	P.O.# _____		
SYSTEM: VICFLEX SERIES AB6 BRACKET FOR DRY PENDENT SPRINKLERS			
REF. DWG.: VICTAULIC SUBMITTAL 10.90			
DRN.BY: RGS	DATE: 02/11/13	DRAWING NUMBER	REV.
CHK.BY: .	DATE: .	VICFLEX-B-FFP	D